

Y 19

HC LEADER 8213

March 13, 2008 • Scurs • M763325

LT LEADER BOARD 6110 P
EATONS LEADER 2233 P
LT KATY'S EASE 4012 P

HC CAD 1075 P
BALDRIDGE CADILLAC 74E P
HC STOCKMAN 7026 P

BW	205	365	ADG	WDA	E P D	BW	WW	YW	TM
92	631	1248	4.40	3.44	D	0.1	23	34	9

A long bodied, smooth made bull with strong gain on test

Y 20

HC GRID MAKER 8214

March 8, 2008 • Scurs • M763326

M6 GRID MAKER 104 ET P
WCR SIR TRADITION 066 P
VCR MISS MAC IV 317
BALDRIDGE CADILLAC 74E P
HC CAD 1081 P
HC SUNSHINE 7089

BW	205	365	ADG	WDA	E P D	BW	WW	YW	TM
100	624	1166	3.53	3.20	D	1.6	26	48	25

Sire 'Grid Maker' is a multiple trait leader



Y 21

HC LEADER 8215

March 21, 2008 • Dehorned • M763327

LT LEADER BOARD 6110 P
EATONS LEADER 2233 P
LT KATY'S EASE 4012 P
BALDRIDGE CADILLAC 74E P
HC CAD 1093
HC DUCE 7191

BW	205	365	ADG	WDA	E P D	BW	WW	YW	TM
84	625	1101	3.89	3.05	D	-1.9	15	25	9

A good son of 'Leader Board', an AICA calving ease trait leader
Dam '1093' is an AICA Sterling Dam of Distinction

Y 22

HC RHINESTONE 8217

March 22, 2008 • Polled • M763328

LT EASY PRO 1158 P
LT UNLIMITED EASE 9108 P
LT LADY MACBETH 8413 ET P
RC WALLSTREET 9751 P
HC WALLSTREET 1104 P
HC CW 7316 P

BW	205	365	ADG	WDA	E P D	BW	WW	YW	TM
90	676	1214	3.89	3.37	D	-0.5	31	47	25

A growthy 'Easy Pro' son

Y 23

HC GRID MAKER 8218

March 16, 2008 • Polled • M763329

M6 GRID MAKER 104 ET P
WCR SIR TRADITION 066 P
VCR MISS MAC IV 317
RC WALLSTREET 9751 P
HC WALLSTREET 1118 P
HC CADILLAC 8057

BW	205	365	ADG	WDA	E P D	BW	WW	YW	TM
99	680	1191	3.78	3.29	D	1.7	33	56	30

This long bodied bull has a performance pedigree
'Grid Maker' is an AICA multiple trait leader
Dam '1118' is an AICA Sterling Dam of Distinction

Y 24

HC GRID MAKER 8219

March 14, 2008 • Polled • M763330

M6 GRID MAKER 104 ET P
WCR SIR TRADITION 066 P
VCR MISS MAC IV 317
RC WALLSTREET 9729 P
HC WALLSTREET 1138 P
HC CW 8151 P

BW	205	365	ADG	WDA	E P D	BW	WW	YW	TM
97	646	1162	4.18	3.21	D	1.3	28	53	26

Sire 'Grid Maker' has an REA EPD of .77 which ranks him at the top of the breed. His sons are noted for their ability to gain

Y 25

HC GRID MAKER 8220

March 30, 2008 • Polled • M763331

M6 GRID MAKER 104 ET P
WCR SIR TRADITION 066 P
VCR MISS MAC IV 317
WR CHUCKWAGON 2409 P
HC CW 1155
HC SKY 9036

BW	205	365	ADG	WDA	E P D	BW	WW	YW	TM
98	685	1170	4.18	3.26	D	1.0	29	52	28

Another long, well balanced 'Grid Maker' son
Dam '1155' has weaned 3 bull calves with an average index of 106

Y 26

HC CAD E 8221

April 20, 2008 • Polled • M763332

HC CAD 2360 P

BALDRIDGE CADILLAC 74E P

HC CHAPS 7048 P

JES HI YIELD D314 P

HC JES 1156 P

HC DUCE 9041 P

BW	205	365	ADG	WDA	E P D	BW	WW	YW	TM
86	711	1136	2.88	3.17		-1.4	24	44	16

This moderate framed, lower birthweight '2360' son weaned off at over 700 pounds

Y 27

HC RIO 8223

March 6, 2008 • Scurs • M763334

LT RIO BRAVO 3181 P

LT RIO BLANCO 1234 P

LT 7N OF DUKE 9083 P

BALDRIDGE CADILLAC 74E P

HC CAD 1160

HC MONTY 9052

BW	205	365	ADG	WDA	E P D	BW	WW	YW	TM
96	649	1157	3.42	3.18		0.4	30	56	25

A solid pedigree with the multiple trait leader 'Rio Bravo' crossed on a Cadillac x Montana dam

Y 28

HC RIO 8224

March 12, 2008 • Polled • M763335

LT RIO BRAVO 3181 P

LT RIO BLANCO 1234 P

LT 7N OF DUKE 9083 P

HC JACK 1192 P

JDJ JACK J258 P

HC NEW TREND 9137 P

BW	205	365	ADG	WDA	E P D	BW	WW	YW	TM
95	675	1265	4.36	3.48		-0.3	32	58	23

Excellent EPDs back up the performance of this thick 'Rio Bravo' son

Y 29

HC CAD E 8226

April 6, 2008 • Polled • M763336

HC CAD 2360 P

BALDRIDGE CADILLAC 74E P

HC CHAPS 7048 P

JES HI YIELD D314 P

HC JES 1202 P

HC MONTY 9164 P

BW	205	365	ADG	WDA	E P D	BW	WW	YW	TM
88	656	1072	3.42	2.99		-1.6	21	41	18

Dam '1202' is an AICA Sterling Dam of Distinction. She has weaned 3 bull calves with a wean ratio of 107 and 3 heifers/110, all in a calving interval between 3/4 to 4/6

Y 30

HC RHINESTONE 8227

March 17, 2008 • Polled • M763337

LT EASY PRO 1158 P

LT UNLIMITED EASE 9108 P

LT LADY MACBETH 8413 ET P

HC MONTY 1206 P

RC MONTANA 644 P

HC JK 9141 P

BW	205	365	ADG	WDA	E P D	BW	WW	YW	TM
94	636	1157	3.84	3.20		0.3	22	41	24

From the genetic indicators, this calf should pass on marbling characteristics with both '1158' and 'Montana', trait leaders for marbling, in his pedigree

Y 31

HC MONTY 8231

March 21, 2008 • Scurs • M763339

RC MONTANA 644 P

HTA WHITEHOT 105A P

RC MS BUDSMYDAD 458 P

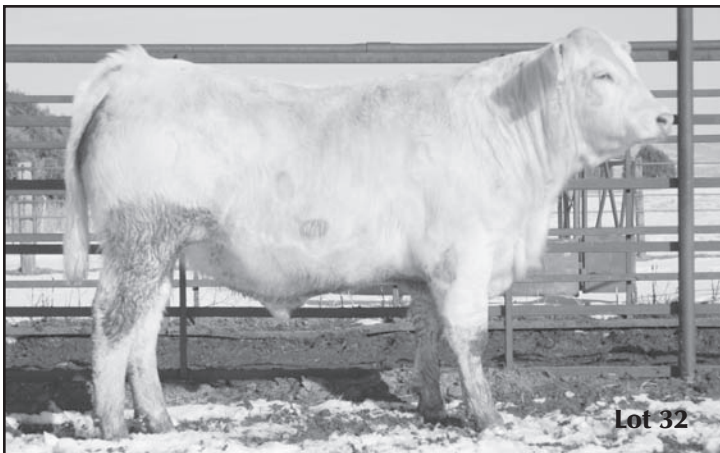
BALDRIDGE CADILLAC 74E P

HC CAD 2029

HC STOCKMAN 5252 P

BW	205	365	ADG	WDA	E P D	BW	WW	YW	TM
94	629	1164	4.07	3.23		1.6	19	40	19

This growthy 'Montana' son also has Intimidator 6056 on the bottom of his pedigree. Both sires are carcass quality trait leaders.



Lot 32

Y 32

HC RIO 8233

March 8, 2008 • Polled • M763340

LT RIO BRAVO 3181 P

LT RIO BLANCO 1234 P

LT 7N OF DUKE 9083 P

BALDRIDGE CADILLAC 74E P

HC CAD 2044 P

HC CHAPS 6184 P

BW	205	365	ADG	WDA	E P D	BW	WW	YW	TM
85	666	1203	3.66	3.30		-1.9	25	46	21

An eye appealing bull sired by 'Rio Bravo', an AICA multiple trait leader Dam '2044' has weaned bulls with indexes of 105/107/106

Y 33 HC MONTY 8234

March 28, 2008 • Dehorned • M763341

RC MONTANA 644 P

HTA WHITEHOT 105A P

RC MS BUDSMYDAD 458 P

BALDRIDGE CADILLAC 74E P

HC CAD 2053

HC DUKE 7055 P

BW	205	365	ADG	WDA	E P D	BW	WW	YW	TM
99	656	1154	4.13	3.21		1.9	23	46	21

Dam '2053' is a solid cow who has produced 5 calves with an average wean index of 106.6

Y 34 HC RIO 8237

March 12, 2008 • Scurs • M763343

LT RIO BRAVO 3181 P

LT RIO BLANCO 1234 P

LT 7N OF DUKE 9083 P

RCR WIND CHESTER 9151 P

HC TEDI 2072 P

HC SKY 8023 P

BW	205	365	ADG	WDA	E P D	BW	WW	YW	TM
85	614	1186	3.37	3.26		-1.6	25	47	19

Y 35 HC CAD E 8245

April 25, 2008 • Polled • M763344

HC CAD 2360 P

BALDRIDGE CADILLAC 74E P

HC CHAPS 7048 P

HC EDGE 3001 P

SKYMONT P UNLIMITED 0115 P

HC STOCKMAN 5056 P

BW	205	365	ADG	WDA	E P D	BW	WW	YW	TM
97	714	1110	2.70	3.07		1.8	32	54	16

This young '2360' son weaned off at the top
Dam '3001' is an AICA Dam of Distinction

Y 36 HC CAD E 8255

April 19, 2008 • Dehorned • M763346

HC CAD 2360 P

BALDRIDGE CADILLAC 74E P

HC CHAPS 7048 P

HC PAUL 3069 P

WCR SIR PAUL 989 P

HC CHUCK 9104 P

BW	205	365	ADG	WDA	E P D	BW	WW	YW	TM
100	680	1196	3.89	3.35		3.3	35	53	19

Dam '3069' has an average wean ratio of 106 on 4 calves

Y 37 HC MONTY 8256

March 21, 2008 • Polled • M763347

RC MONTANA 644 P

HTA WHITEHOT 105A P

RC MS BUDSMYDAD 458 P

WCR SIR PAUL 989 P

HC PAUL 3072 P

HC LD 9132

BW	205	365	ADG	WDA	E P D	BW	WW	YW	TM
84	664	1268	4.47	3.49		0.0	21	41	19

A deep bodied, stylish 'Montana' son with excellent performance numbers
Dam '3072' is backed by a highly productive cow family – her grandam has a record of 9 calves with an average weaning index of 103



Lot 37

Y 38 HC CAD E 8257

March 20, 2008 • Dehorned • M763348

HC CAD 2360 P

BALDRIDGE CADILLAC 74E P

HC CHAPS 7048 P

HC JACK 3076 P

JDJ JACK J258 P

HC UNLIMITED 9156 P

BW	205	365	ADG	WDA	E P D	BW	WW	YW	TM
79	660	1172	3.80	3.22		-1.6	23	38	10

Y 39 HC GRID MAKER 8259

March 20, 2008 • Polled • M763349

M6 GRID MAKER 104 ET P

WCR SIR TRADITION 066 P

VCR MISS MAC IV 317

HC JACK 3080 P

JDJ JACK J258 P

HC MONTY 9175 P

BW	205	365	ADG	WDA	E P D	BW	WW	YW	TM
98	603	1212	4.29	3.33		1.2	27	53	21

A well balanced, eye appealing 'Grid Maker' son

Y 40

HC PRO 8261

March 13, 2008 • Scurs • M763350

LT PRO ASSERT 4211 P

LT ASSERTION 1277 P

LT LADY MACBETH 2131 ET P

HC TED 3095 P

RCR WIND CHESTER 9151 P

HC CW 0060 P

BW	205	365	ADG	WDA	E P D	BW	WW	YW	TM
95	683	1218	3.71	3.34		1.0	25	43	17

Sire 'Pro Assert' is credited with producing thick, deep bodied progeny
Grandam '0060' has produced 6 calves with an average wean index of 103

Y 41

HC MONTY 8266

March 24, 2008 • Dehorned • M763353

RC MONTANA 644 P

HTA WHITEHOT 105A P

RC MS BUDSMYDAD 458 P

HC JK 3159 P

SCHURRTOP 5627 P

HC JACK 1204

BW	205	365	ADG	WDA	E P D	BW	WW	YW	TM
92	613	1192	3.89	3.29		0.4	20	45	16

Montana X '5627' pedigree – '5627' is the sire to Wyoming Wind 4020

Y 42

HC GRID MAKER 8267

March 25, 2008 • Polled • M763354

M6 GRID MAKER 104 ET P

WCR SIR TRADITION 066 P

VCR MISS MAC IV 317

HC 9 3160 P

RC PREMIER 9901 P

HC MONTY 1206 P

BW	205	365	ADG	WDA	E P D	BW	WW	YW	TM
98	670	1204	4.18	3.32		1.8	26	53	25

Y 43

HC CAD 3 8270

March 23, 2008 • Polled • M763356

HC CAD 5218 P

BALDRIDGE CADILLAC 74E P

HC CHAPS 7048 P

HC CAD 4005 P

BALDRIDGE CADILLAC 74E P

HC STOCKMAN 5252 P

BW	205	365	ADG	WDA	E P D	BW	WW	YW	TM
94	610	1128	3.48	3.09		1.4	19	29	12

Y 44

HC WIND 8274

March 16, 2008 • Scurs • M763357

TR MR WYOMING WIND 5583R P

LT WYOMING WIND 4020 P

THOMAS MS PRIME 2510M P

HC EDGE 4021 P

SKYMONT P UNLIMITED 0115 P

HC CW 7038 P

BW	205	365	ADG	WDA	E P D	BW	WW	YW	TM
92	728	1206	3.26	3.29		1.1	32	54	22

Sire '5583's calves have consistently weaned at the top
Dam '4021' is an excellent young cow – her 3 calves have an average WW ratio of 110

Y 45

HC STASH 8277

March 08, 2008 • Scurs • M763358

CCR HAMS STASHER R801 P

HC A 3336 P

CCR MISS EASY M520 P

HC CAD 4050

BALDRIDGE CADILLAC 74E P

HC CHUCK 9104 P

BW	205	365	ADG	WDA	E P D	BW	WW	YW	TM
85	647	1067	3.28	2.90		-1.3	26	38	19

The 'Stash' calves tend to be moderate framed and deep with extra width and overall performance

Y 46

HC CAD 3 8280

March 31, 2008 • Polled • M763359

HC CAD 5218 P

BALDRIDGE CADILLAC 74E P

HC CHAPS 7048 P

HC PAUL 4061 P

WCR SIR PAUL 989 P

HC CW 0060 P

BW	205	365	ADG	WDA	E P D	BW	WW	YW	TM
94	689	1293	4.49	3.56		1.2	24	36	17

Dam '4061' is proving herself as a high performing cow – she has weaned three calves with an average 205 index of 106.5

Y 47

HC CAD 3 8282

March 14, 2008 • Polled • M763360

HC CAD 5218 P

BALDRIDGE CADILLAC 74E P

HC CHAPS 7048 P

HC CIG R 4067 P

HC CIGAR 2319 P

HC CAD 0130 P

BW	205	365	ADG	WDA	E P D	BW	WW	YW	TM
82	623	1116	2.99	3.03		-0.4	17	26	15

Note 'HC Cad 0103' in this pedigree. She is the dam to Lot 12, and grandam to Lot 7 and 62, and great grandam to Lot 3