

# Y 1

## HC RHINESTONE 8355

March 18, 2008 • Polled • M763414

LT EASY PRO 1158 P

LT UNLIMITED EASE 9108 P

LT LADY MACBETH 8413 ET P

HC ROMEO 6073 P

SCC FABIO 158N P

HC CAD 2022 P

BW	205	365	ADG	WDA	E P D	BW	WW	YW	TM
93	690	1356	4.25	3.51		0.2	34	52	26

This herd sire prospect has put it all together – he is a long bodied, eye appealing bull with performance built in  
 Dam '6073' is a first calf heifer  
 Sire '1158' is a multiple trait leader, excelling in hot carcass weight and marbling



Lot 1



Lot 2

# Y 2

## HC STASH 8332

March 24, 2008 • Polled • M763395

CCR HAMS STASHER R801 P  
 HC A 3336 P  
 CCR MISS EASY M520 P

HC RHINESTONE 5136 P  
 LT EASY PRO 1158 P  
 HC TED 3081 P

BW	205	365	ADG	WDA	E P D	BW	WW	YW	TM
87	751	1249	3.42	3.33		-1.8	29	47	23

A powerful, meat bull  
 Dam '5136' is a second calf heifer sired by the trait leader Easy Pro 1158  
 Sire '801' produces width and depth in his progeny

# Y 3

## HC STASH 8334

March 20, 2008 • Polled • M763398

CCR HAMS STASHER R801 P  
 HC A 3336 P  
 CCR MISS EASY M520 P

HC LIGHTNING 5142 P  
 SCHURRTOP GENETIC EDGE 2242 P  
 HC PAUL 3100 P

BW	205	365	ADG	WDA	E P D	BW	WW	YW	TM
90	782	1338	3.89	3.57		-0.2	37	58	24

A high weaning weight bull with strong EPDs  
 Dam '5142' is a second calf heifer out of a highly productive cow family. Her grandmother, HC Sky 0103, shows up in a number of the pedigrees in this sale offering



Lot 3



Lot 4

# Y 4

## HC STASH 8330

March 20, 2008 • Polled • M763393

CCR HAMS STASHER R801 P  
 HC A 3336 P  
 CCR MISS EASY M520 P

HC FASTTRACK 5126 P  
 BALDRIDGE FASTTRACK 82F P  
 HC CAD 3055 P

BW	205	365	ADG	WDA	E P D	BW	WW	YW	TM
73	681	1288	3.82	3.43		-4.0	22	35	20

A deep, thick '801' son. One of lowest BW EPDs combined with notable growth  
 Dam '5126' is a second calf heifer - her first calf posted a wean ratio of 109.7



Lot 5

# Y 5 HC STASH 8314

March 20, 2008 • Polled • M763379

HC A 3336 P  
 CCR HAMS STASHER R801 P  
 CCR MISS EASY M520 P  
 RC MONTANNA 644 P  
 HC MONTY 5050  
 HC CAD 0052 P

BW	205	365	ADG	WDA	E P D	BW	WW	YW	TM
83	693	1231	4.16	3.27		-2.4	22	40	18

Extra volume and width in this deep ribbed bull  
 '5050' is second calf Montana x Cadillac heifer – a great cross producing top end bulls and females

# Y 6 HC STASH 8289

March 13, 2008 • Polled • M763364

HC A 3336 P  
 CCR HAMS STASHER R801 P  
 CCR MISS EASY M520 P  
 HC ONTRACK 4114 P  
 HC FASTTRACK 2479 P  
 HC CAD 2038

BW	205	365	ADG	WDA	E P D	BW	WW	YW	TM
90	686	1313	3.78	3.56		-0.9	30	47	22

This powerful, deep bodied, square bull is built to add rib and performance to his offspring



Lot 6

# Y 7 HC WIND 8315

March 29, 2008 • Dehorned • M763380

LT WYOMING WIND 4020 P  
 TR MR WYOMING WIND 5583R P  
 THOMAS MS PRIME 2510M P  
 BALDRIDGE CADILLAC 74E P  
 HC CAD 5053  
 HC SKY 0103 P

BW	205	365	ADG	WDA	E P D	BW	WW	YW	TM
87	711	1303	4.90	3.49		-0.8	31	47	20

Superior performance and excellent numbers across the board  
 Another example of a stacked pedigree – '5053' is from a great cow family with dam '0103' on the bottom and on the top is Wyoming Wind, the No. 1 registration bull in the history of the Charolais breed



Lot 7

# Y 8 HC WIND 8312

March 22, 2008 • Polled • M763378

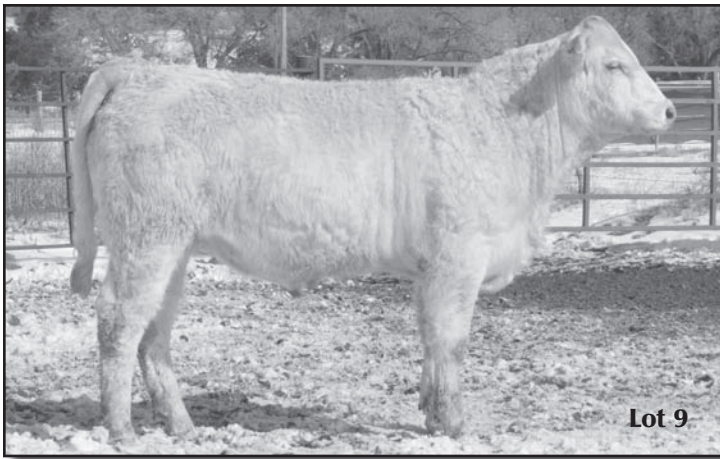
LT WYOMING WIND 4020 P  
 TR MR WYOMING WIND 5583R P  
 THOMAS MS PRIME 2510M P  
 SCC FABIO 158N P  
 HC JULIET 5045 P  
 HC CAD 9157 P

BW	205	365	ADG	WDA	E P D	BW	WW	YW	TM
89	745	1289	3.55	3.44		-0.1	34	52	19

'8312' is an eye appealing, very well balanced bull with another set of excellent performance data in the BW, WW and YW categories  
 Dam '5045' is a second calf heifer out of '9157', a highly productive cow with average wean ratios of 107 on two bulls and 104 on 5 heifers



Lot 8



Lot 9

**Y 9**

**HC CAD 3 8324**

March 29, 2008 • Polled • M763387

HC CAD 5218 P

BALDRIDGE CADILLAC 74E P

HC CHAPS 7048 P

LT EASY PRO 1158 P

HC RHINESTONE 5100 P

HC JACK 2082 P

BW	205	365	ADG	WDA	E P D	BW	WW	YW	TM
95	703	1319	3.93	3.54		0.6	25	38	17

Lots of rib and above average gains

Sire '5218' is a highly fertile Cadillac son

Dam '5100' is a second calf heifer sired by the trait leader, '1158'

**Y 10**

**HC MONTY 8235**

March 13, 2008 • Polled • M763342

RC MONTANA 644 P

HTA WHITEHOT 105 P

RC MS BUDSMYDAD 458 P

HC CAD 2055 P

BALDRIDGE CADILLAC 74E P

HC CHAPS 7076 P

BW	205	365	ADG	WDA	E P D	BW	WW	YW	TM
90	728	1189	3.82	3.28		0.9	26	48	21

Dam '2055' is an AICA Sterling Dam of Distinction producing five calves with an average wean ratio of 109

Sire 'Montana' is a trait leader for carcass weight and marbling



Lot 10



Charolais Advantage is an age-and-source-verified program designed to add even more value to your Charolais genetics. Co-branded through IMI Global's USDA-approved USVerified™ (PVP) program, Charolais Advantage will provide additional marketing opportunities to producers using Charolais genetics in their herd.

CONTACT: Dennis Metzger for more information, 816-519-8208.

**Y 11**

**HC RIO 8263**

March 16, 2008 • Scurs • M763352

LT RIO BRAVO 3181 P

LT RIO BLANCO 1234 P

LT 7N OF DUKE 9083 P

JDJ JACK J258 P

HC JACK 3110 P

HC WALLSTREET 0185 P

BW	205	365	ADG	WDA	E P D	BW	WW	YW	TM
94	702	1178	2.88	3.23		0.5	35	61	25

Excellent EPDs

Dam '3110' has produced 3 bull calves with an average wean index of 106

Multiple trait leader Rio Bravo is a proven calving ease to carcass sire

**Y 12**

**HC LEADER 8205**

March 18, 2008 • Polled • M763318

LT LEADER BOARD 6110 P

EATONS LEADER 2233 P

LT KATY'S EASE 4012 P

HC CAD 0130 P

BALDRIDGE CADILLAC 74E P

HC SKY 7192 P

BW	205	365	ADG	WDA	E P D	BW	WW	YW	TM
85	728	1231	3.12	3.40		-1.3	25	37	15

A high volume, deep ribbed bull in a very smooth package with strong individual performance

Dam '0103' is a highly productive cow with five daughters averaging 110 for wean index



Lot 12

# Y 13

## HC LEADER 8378

April 4, 2008 • Polled • M763422

LT LEADER BOARD 6110 P  
 EATONS LEADER 2233 P  
 LT KATY'S EASE 4012 P  
 HC RHINESTONE 6159 P  
 LT EASY PRO 1158 P  
 HC TQ 4075 P

BW	205	365	ADG	WDA	E P D	BW	WW	YW	TM
83	724	1333	4.38	3.49		-0.3	27	44	15

Remarkable spread from birth to yearling weights for this smooth built bull  
 Dam '6159' is a first calf heifer sired by multiple trait leader, '1158'  
 Sire 'Leader Board' is a trait leader for calving ease



Lot 13

# Y 14

## HC BLEND 8202

March 16, 2008 • Polled • M763316

LT EASY BLEND 5125 P  
 LT UNLIMITED EASE 9108 P  
 LT BRENDA 1014 P  
 HC CAD 9069 P  
 BALDRIDGE CADILLAC 74E P  
 HC CHAPS 4233 P

BW	205	365	ADG	WDA	E P D	BW	WW	YW	TM
85	640	1253	4.45	3.45		-0.1	32	53	18

Sire 'Easy Blend 5125' is a multiple trait leader noted for adding performance, length and style to his offspring  
 The high selling bull in our 2008 sale was an Easy Blend son going to California  
 Dam '9069' is a highly fertile cow, producing 8 calves in a March 3 to March 29 range

# Y 15

## HC MONTY 8209

March 29, 2008 • Polled • M763321

RC MONTANA 644 P  
 HTA WHITEHOT 105A P  
 RC MS BUDSMYDAD 458 P  
 HC WALLSTREET 1014 P  
 RC WALLSTREET 9729 P  
 HEBBERTS MS UNLIMITED 3247 P

BW	205	365	ADG	WDA	E P D	BW	WW	YW	TM
98	640	1232	3.91	3.44		1.3	17	37	21

Dam '1014' is another example of our emphasis on fertility in our cowherd.  
 She has produced 6 calves with an average wean index of 102 in a calving interval between 3/2 to 3/29  
 Sired by marbling and carcass weight trait leader 'Montana'

# Y 16

## HC MONTY 8210

March 23, 2008 • Polled • M763322

RC MONTANA 644 P  
 HTA WHITEHOT 105A P  
 RC MS BUDSMYDAD 458 P  
 HC CAD 1019  
 BALDRIDGE CADILLAC 74E P  
 HC LONA 3305

BW	205	365	ADG	WDA	E P D	BW	WW	YW	TM
96	660	1268	4.72	3.52		1.6	20	41	20

Gainability of the 'Montana' calves is evident in this deep ribbed, long bodied bull  
 This is dam '1019's third bull calf with an average wean index of 105 on the three



Lot 15

# Y 17

## HC LEADER 8211

March 27, 2008 • Scurs • M763323

LT LEADER BOARD 6110 P  
 EATONS LEADER 2233 P  
 LT KATY'S EASE 4012 P  
 HC MONTY 1039 P  
 RC MONTANA 644 P  
 HC STOCKMAN 5056 P

BW	205	365	ADG	WDA	E P D	BW	WW	YW	TM
89	634	1110	4.09	3.09		-0.1	19	34	9

Moderate framed, thick 'Leader Board' son  
 Dam '1039' is a combination of Montana and Intimidator genetics, both noted for their positive carcass qualities

# Y 18

## HC CAD E 8212

April 12, 2008 • Scurs • M763324

HC CAD 2360 P  
 BALDRIDGE CADILLAC 74E P  
 HC CHAPS 7048 P  
 HC PAUL 1057  
 WCR SIR PAUL 989 P  
 HC JK 6106 P

BW	205	365	ADG	WDA	E P D	BW	WW	YW	TM
84	645	1177	3.55	3.30		-1.8	22	36	12

A meaty younger bull with below average birth weight